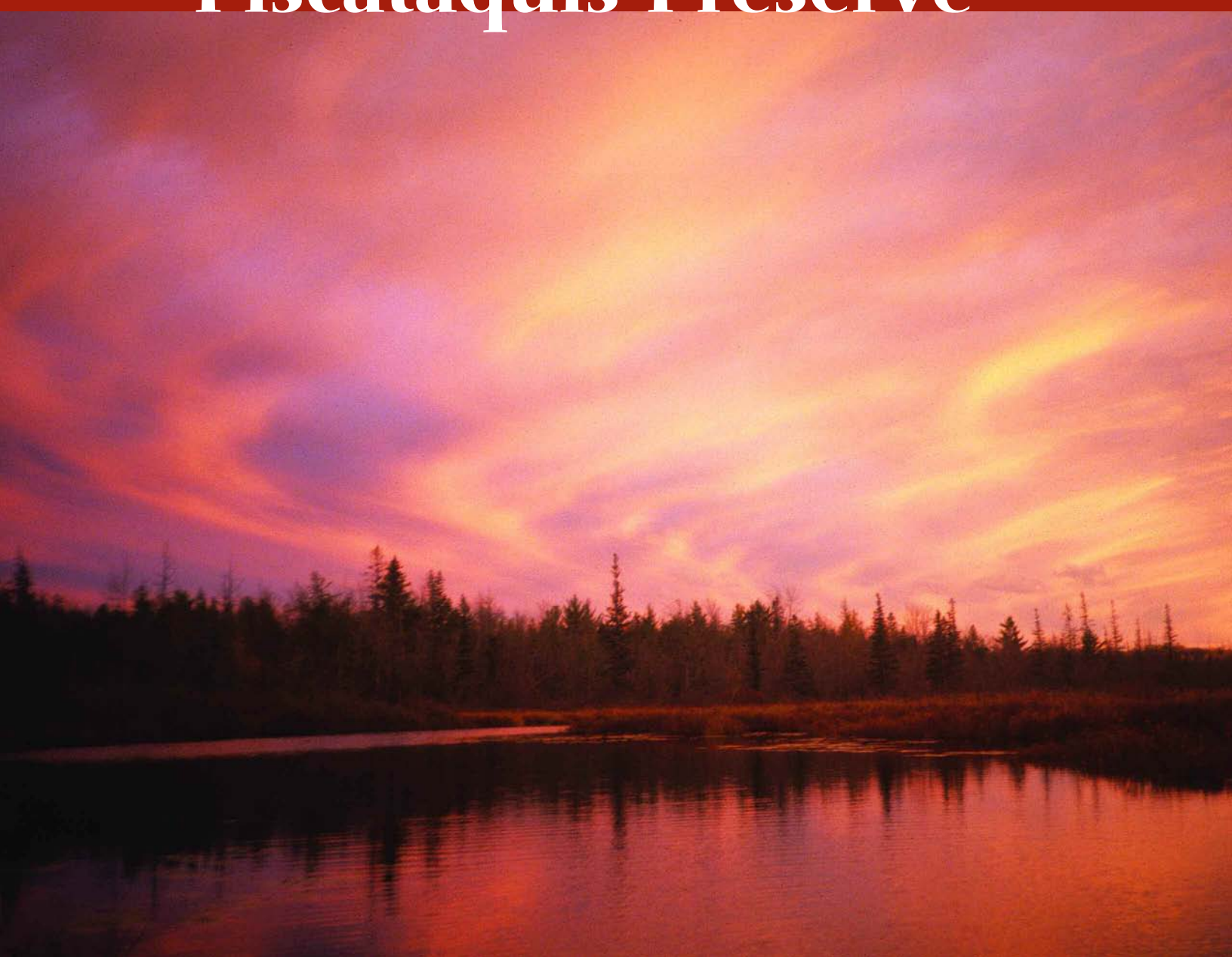


NORTHEAST
WILDERNESS
TRUST

A national treasure

Piscataquis Preserve



Please help the Northeast Wilderness Trust

preserve an additional three miles of wild shoreline on the Piscataquis River, protect salmon habitat, conserve a unique grove of American chestnuts, and expand a recovering wilderness in the wild heart of Maine.

In remote, central Maine lies 1,200 acres of future wild, untamed forest. Spruce and fir trees tower over mossy hillocks. Geese and ducks ride the currents of the Piscataquis River as it meanders through the dark forests and bright plains. Golden marsh grasses bend and sway in the breeze.

The Piscataquis Preserve—part of the greater Penobscot Basin—is a tract of conifer and deciduous forest, wetlands, and riparian habitat that will be protected by the Northeast Wilderness Trust. This parcel, part of a growing network of conserved lands, offers outstanding wilderness recovery potential. Here, nature will direct the ebb and flow of life, and the plants, animals, and natural processes will be sustained in perpetuity.

With three miles of frontage on the Piscataquis River, extensive adjacent and nearby conservation lands, crucial habitat for rare and endangered species, and a one-of-a-kind grove of American chestnuts, the Piscataquis Preserve offers a rare opportunity to create a wild legacy.

A Vital Link Conservation science tells us that the best way to sustain biodiversity is by protecting large, connected natural areas. Under the perpetual care of the Northeast Wilderness Trust, the Piscataquis Preserve will become a part of an expansive, 20,000-acre network of conserved lands. The Preserve is adjacent to the 1,500-acre Alder Stream property that the Trust has protected since 2006. Piscataquis Preserve encompasses 245 acres of “high value habitat” wetlands, which serve as an important stopover for migratory waterfowl. The greater Piscataquis Preserve area acts as a vital habitat linkage for many species, including wide-ranging mammals such as bear, marten, ermine, fisher, and possibly even the federally endangered Canada lynx. It will be conserved for the benefit of the multitude of creatures that call this landscape “home.”



The Piscataquis Preserve provides important breeding grounds for several wetland-associated species that are identified as “species of greatest conservation need” in Maine’s Comprehensive Wildlife Action Plan, including American woodcock, olive-sided flycatcher, Canada warbler, American bittern (left), pied-billed grebe (above), wood thrush, and wood turtle. These wetlands also serve as a stopover for migratory waterfowl, various warblers, and raptors including red-shouldered hawks and northern harriers.

Natural Treasures The **American chestnut** was formerly one of the most abundant trees in the eastern United States. Early settlers valued its lumber for everything from fenceposts to furniture, and the annual nut crop provided a key food source for wildlife. In the early 1900s an invasive fungus decimated the species. Today, finding a single mature chestnut is cause for celebration. Piscataquis Preserve contains hundreds of chestnuts across nearly fifteen acres, including several mature, nut-producing trees. It is thought to be the largest grove of wild, reproducing American chestnuts in existence, anywhere. Protecting the Piscataquis Preserve will ensure that this stand of trees will remain a seedbed of recovery—and a vital scientific resource for researchers with the American Chestnut Foundation.

The Piscataquis is one of only a handful of rivers in North America with wild **Atlantic salmon**, a federally listed endangered species, and it has recently been designated “critical habitat” for the salmon’s survival. Atlantic salmon figure prominently in Maine’s cultural and natural character, and depend on the state’s streams and rivers as nurseries and spawning grounds. The river frontage along the future Piscataquis Preserve contains vital rearing habitat for young salmon. Keeping the tract undeveloped and forever-wild will help advance recovery efforts for this iconic species.



Right: Two views of the Piscataquis River; Atlantic salmon; ladyslippers thriving in the cool shade of spruce trees.

Left: The crown of a healthy American chestnut found in the Piscataquis Preserve.

LEFT: MERRILL LYNCH
RIGHT: RUDY ENGHOLM;
DELIA DELONGCHAMP;
USFWS; KATIE KUNHARDT

Piscataquis Preserve at a Glance

Size Approximately 1,200 acres, bordering the Wilderness Trust's 1,500-acre Alder Stream Preserve

Context Part of a 20,000-acre complex of protected land, in a priority forest matrix block identified by The Nature Conservancy

Location Atkinson, Maine

Objective Forever-wild sanctuary

Cost \$2 million, including project costs and stewardship fund

Seller A respected timber company that seeks a conservation outcome for this tract

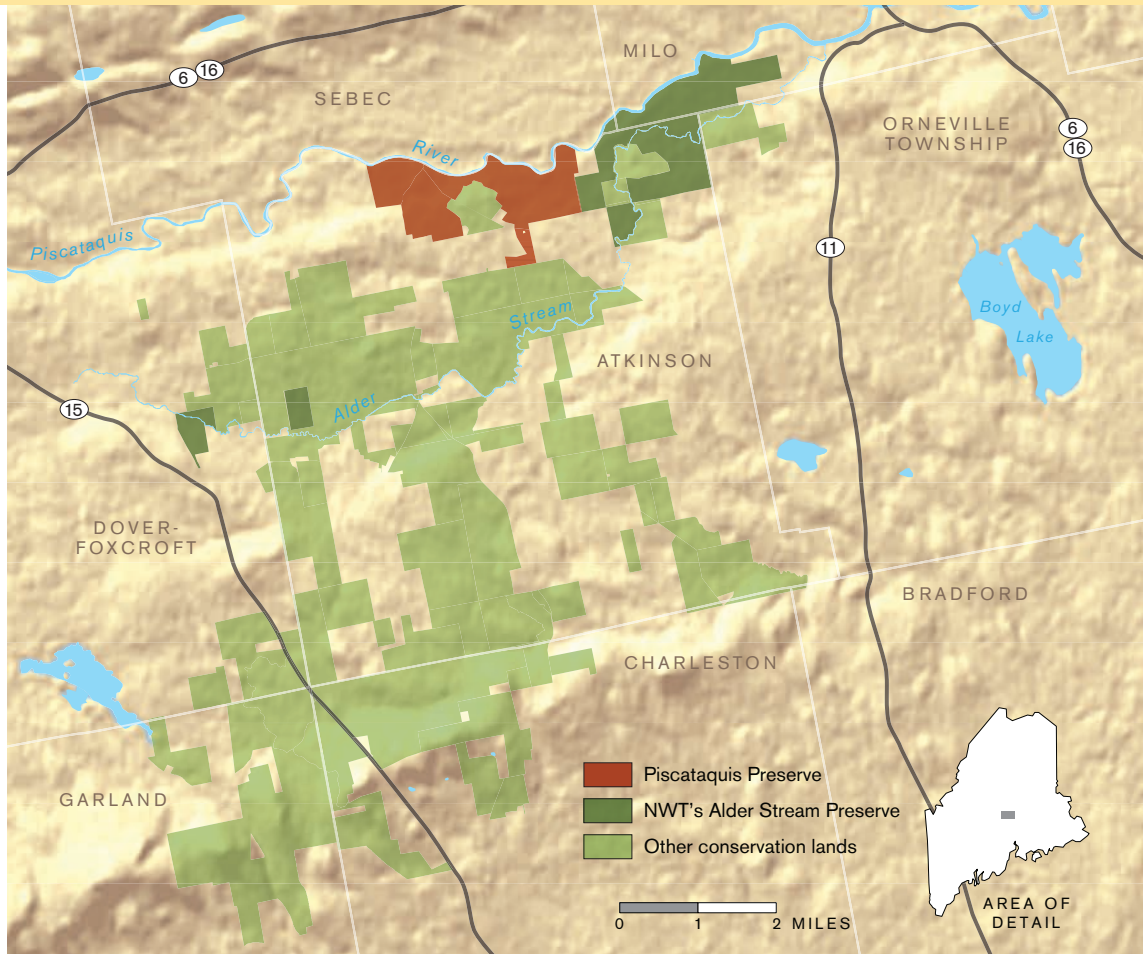
Habitat Spruce-fir forest, northern hardwood forest, riparian and wetland habitat

Creatures Moose, bald eagles, American bitterns, Atlantic salmon, olive-sided flycatchers

Values Rare American chestnut grove, wilderness connectivity, Atlantic salmon habitat, high priority wetlands

Threats Subdivision, forest fragmentation

Partners American Chestnut Foundation, U.S. Fish and Wildlife Service, Atlantic Salmon Federation, The Nature Conservancy, Sweet Water Trust, and others



Because of its exceptional ecological values, landscape context, and wilderness recovery potential, the Piscataquis Preserve is a priority for conservation. Please lend your support!

The Northeast Wilderness Trust has a narrow window to raise funds and close the deal to preserve the rich natural landscape of Piscataquis Preserve. You can help. Spread the word about this landmark conservation opportunity. Financial donations of every size are needed to save Piscataquis Preserve. Please call or write to arrange a gift of stocks. You may also contribute online, or send a tax-deductible check to:



American chestnut crown with burrs, in the Piscataquis Preserve MERRILL LYNCH

NORTHEAST



WILDERNESS
TRUST

14 Beacon Street, Suite 506
Boston, MA 02108
617-742-0628
617-742-0639 (fax)
www.newwildernesstrust.org
info@newwildernesstrust.org

The Northeast Wilderness Trust is a regional land trust working to preserve and restore forever-wild landscapes for wildlife and people.